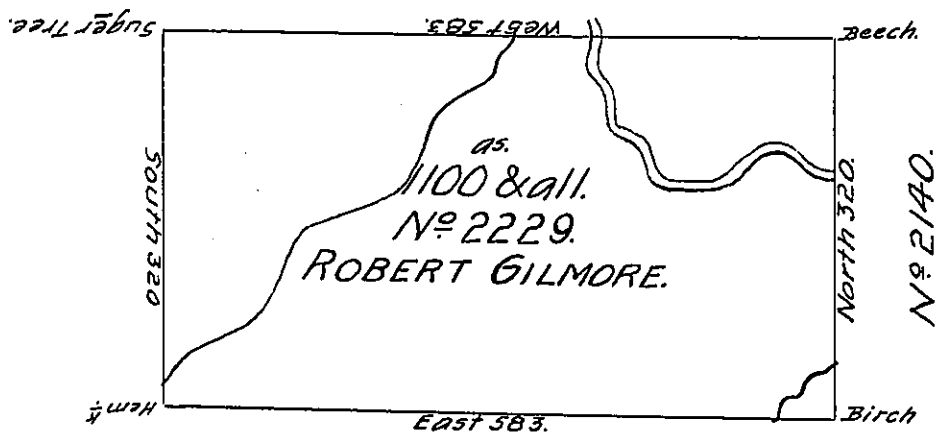


N^o 69.

N^o 2211



N^o 2140.

2140.

N^o 2209.

2209

Situate on a Branch of the Oswayo Creek about five Miles South of the State Line in North^d County, containing 1100 Acres and the Usual allowance for Roads &c. Surveyed June 20th 1793 for Robert Gilmore in perseverance of a Warrant N^o 2229 bearing date-12th December 1792.

John Canan

Daniel Brodhead Esq^r S. G.

D. S.

IN TESTIMONY that the above is a copy of the original remaining on file in the Department of Internal Affairs of Pennsylvania, made conformably to an Act of Assembly approved the 16th day of February, 1833, I have hereunto set my Hand and caused the Seal of said Department to be affixed at Harrisburg, this fourth day of November 1904.

Grace D. Pearson
 Secretary of Internal Affairs.